

Sample Date : 2015-4-17 6:52:51 AM

Trials : 1

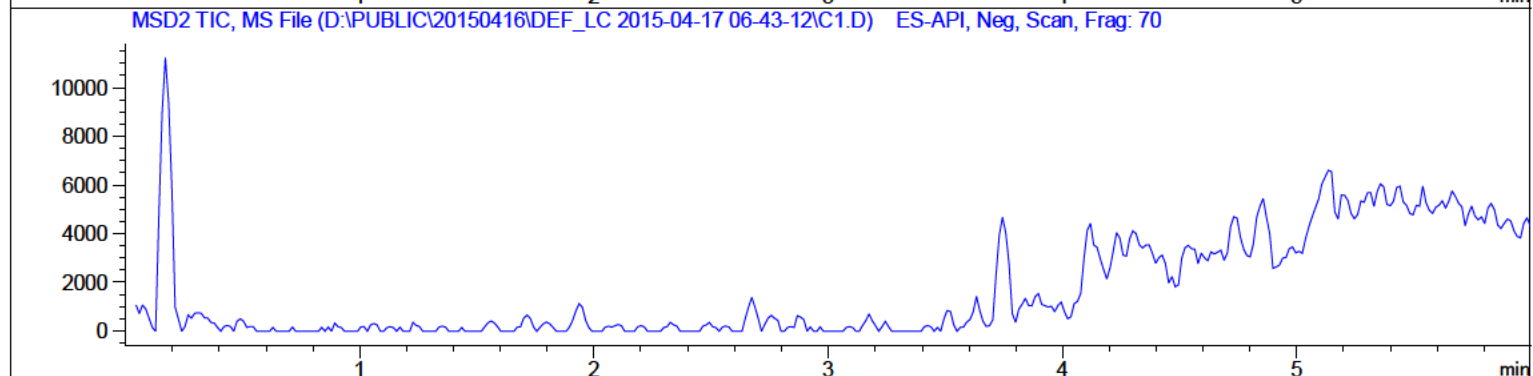
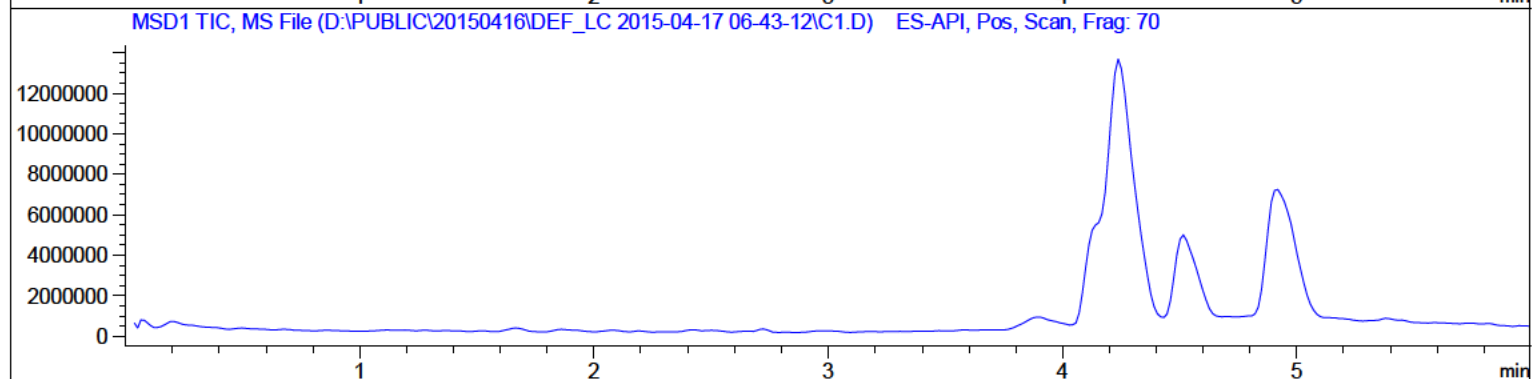
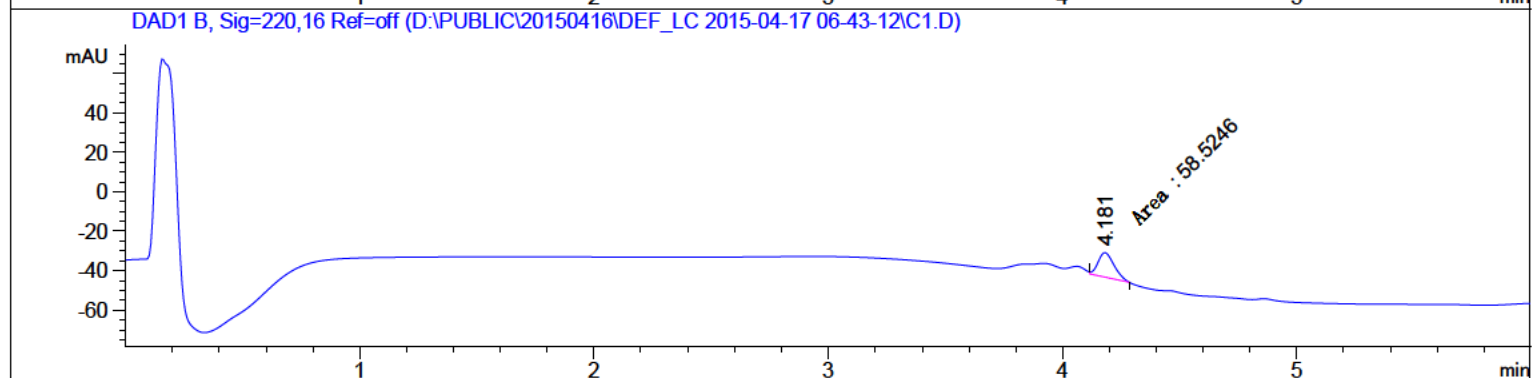
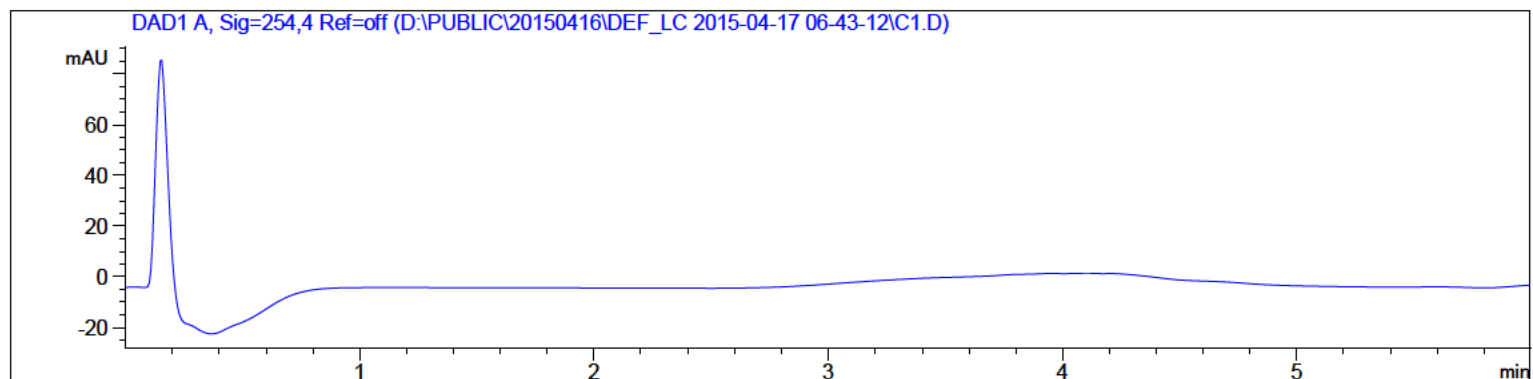
Injection Volume : 3 µl

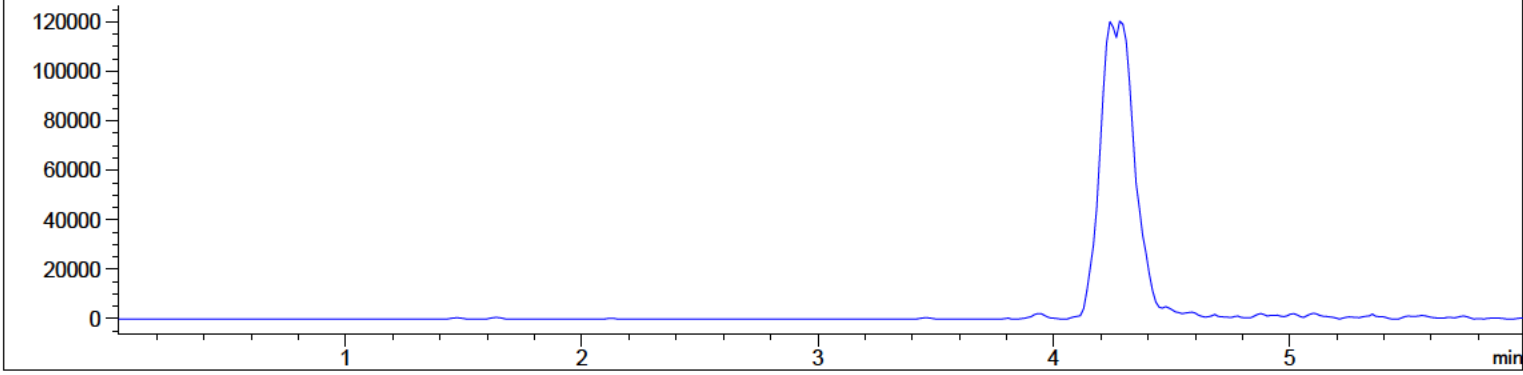
Collection Method : D:\Public\20150416\DEF_LC 2015-04-17 06-43-12\60-90 6MIN.M

Last Modified : 2015-4-17 6:40:27 AM

Analytical Techniques : D:\PUBLIC\20150417\DEF_LC 2015-04-17 13-35-07\ZJ.D\DA.M (10-80

Last modified : 2015-4-17 1:56:27 PM





=====
 Area percentage report
 =====

Order : No.
 product factor : 1.0000
 Dilution factor : 1.0000
 Internal standard multiplier and dilution factor

No. 1: DAD1 A, Sig=254,4 Ref=off

No. 2: DAD1 B, Sig=220,16 Ref=off

Peak #	Retention Time [min]	Type	Peak Width [min]	Peak Area [mAU*s]	Peak Height [mAU]	Peak Area %
1	4.181	MM	0.0785	58.52456	12.41804	100.0000

Total Amount : 58.52456 12.41804

No. 3: MSD1 TIC, MS File

No. 4: MSD2 TIC, MS File

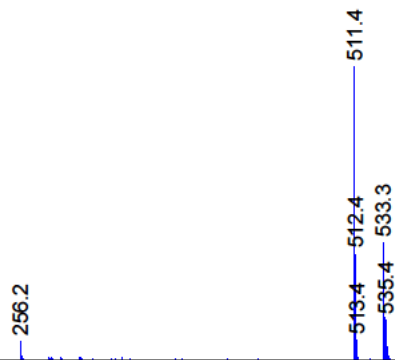
No. 5: MSD1 282, EIC=281.7:282.7

=====
 *** Report ends ***

MS Spectrum

MSD1 SPC, time=4.111 of D:\PUBLIC\20150416\DEF_LC 2015-04-17 06-43-12\1.D ES-API, Pos, Scan, Frag: 70

Max: 1.63533e+006



MSD1 SPC, time=4.250 of D:\PUBLIC\20150416\DEF_LC 2015-04-17 06-43-12\1.D ES-API, Pos, Scan, Frag: 70

Max: 4.99354e+006

